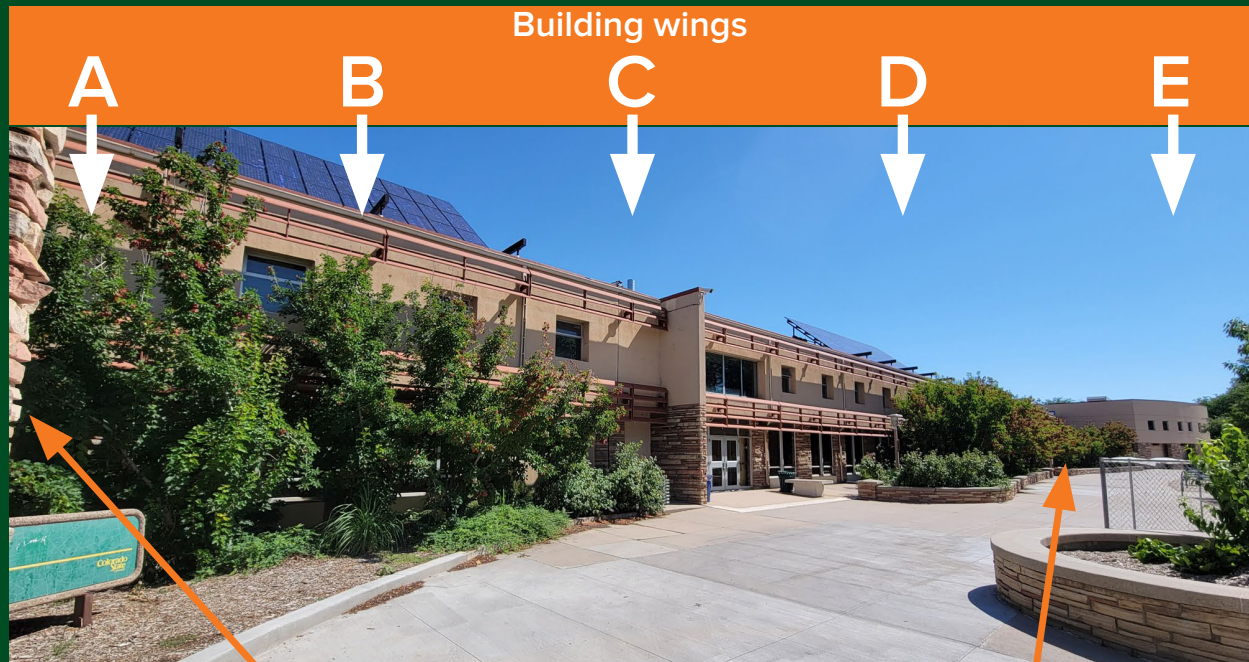


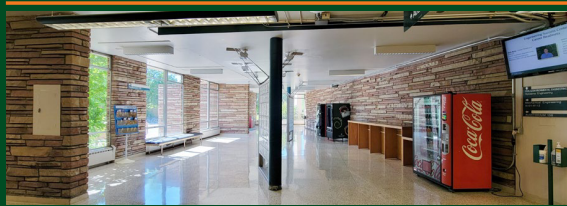
Find your way around the Engineering Building

← Lory Student Center

Statistics & CSU Oval →



Engineering 100 Classroom



Engineering 120 Classroom



Engineering 100 Classroom • Mechanical Engineering (A101)
Civil and Environmental Engineering (A203) • Chemical and Biological Engineering (AR102)
Systems Engineering (AR202) • Research Business Office (B204)
Electrical and Computer Engineering (AR104) • Engineering Business Office (AR204)
One Water Solutions Institute (AR205) • Engineering 120 Classroom • Physics Department (AR124)
E Wing: Math, Physics, and other Engineering-related classes



Need more help?

Visit the Engineering Success Center webpage for
the latest information about the college.



WALTER SCOTT, JR.
COLLEGE OF ENGINEERING
COLORADO STATE UNIVERSITY

Find your way around the Engineering Building



Lory Student Center

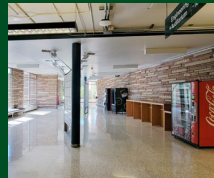


Need more help?

Visit the Engineering Success Center webpage for the latest information about the college.



A
Wing



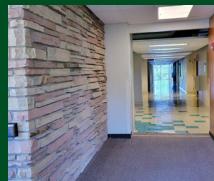
Engineering 100 Classroom
Mechanical Engineering (A101)
Civil and Environmental Engineering (A203)

A-B
Infill



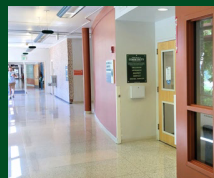
Chemical and Biological Engineering (AR102)
Systems Engineering (AR202)

B
Wing



Research Business Office (B204)

B-C
Infill



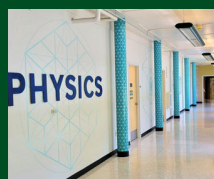
Electrical and Computer Engineering (AR104)
B/C Infill study space (AR106)
Engineering Business Office (AR204)

C-D
Infill



One Water Solutions Institute (AR205)

D & E
Wings



Engineering 120 Classroom
Physics Department (AR124)
E Wing: Math, Physics, and other Engineering related classes



Statistics Building



WALTER SCOTT, JR.
COLLEGE OF ENGINEERING
COLORADO STATE UNIVERSITY

Find your way around Engineering

CSU Engineering Building

A Wing

First Floor

Engineering 100 Classroom
Internet Café (A104)
Mechanical Engineering (A101)

Second Floor

Civil and Environmental Engineering (A203)

A-B Infill

First Floor

Chemical and Biological Engineering (AR102)

Second Floor

Systems Engineering (AR202)

B Wing

Second Floor

Research Business Office (B204)

B-C Infill

First Floor

Electrical and Computer Engineering (AR104)
B/C Infill study space (AR106)

Second Floor

Engineering Business Office (AR204)

C Wing

ECE Lab Spaces

D & E Wings

Engineering 120 Classroom
Physics Department (AR124)
E Wing: Math, Physics, and other Engineering related classes



Glover Building

ETS: Engineering Technology Services (100)



Suzanne and Walter Scott, Jr. Bioengineering Building

First Floor

Don and Susie Law Engineering Success Center
Judson M. Harper Auditorium

Second Floor

Office of the Dean (202)
School of Biomedical Engineering (225)
Atlas Design Studio
Cassini Design Studio

Third Floor

Odyssey Design Studio
Phoenix Design Studio



Need more help?

Visit the Engineering Success Center webpage for the latest information about the college.



WALTER SCOTT, JR.
COLLEGE OF ENGINEERING
COLORADO STATE UNIVERSITY